

PIKE DELTA YORK  
LOCAL  
SCHOOL DISTRICT

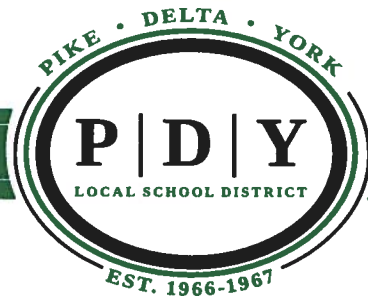


Monthly Financial Report - May 2019

June 19th, 2019

Matt A. Feasel, Treasurer/C.F.O.





June 19<sup>th</sup>, 2019

Dear Members of the Pike Delta York Board of Education:

The following pages represent the financial status of the Pike Delta York Local School District as of May 31<sup>st</sup>, 2019 for all funds submitted for your consideration. Please review the following:

1. General, Revenue & Budget Analysis
2. Cash Reconciliation Report
3. Investment Register
4. Financial Report by Fund
5. Monthly Check Register
6. Unencumbered Liabilities Register
7. Transfer and Advance Register
8. Donations to the District
9. Appropriation Revisions for the month and fiscal year 2018-19.

As always, if you should have any questions or need any additional information, please feel free to contact me at any time at 419-822-3391, Ext 5103.

Respectfully Submitted,

Matt A. Feasel, Treasurer/CFO  
Pike Delta York Local School District

# PIKE DELTA YORK LOCAL SCHOOL DISTRICT Monthly Financial Narrative

## General Fund Analysis

This document is prepared in an attempt to summarize the cash position of the Pike Delta York Local School District as of the end of May, 2019. This analysis incorporates four (4) different areas:

1. 2018-19 Fiscal Year Estimate - This column represents the actual cash balance on July 1, 2018 (\$ 3,164,101.30) at the beginning of the fiscal year. It also contains the projected revenue from July 1, 2018 to June 30, 2019, (\$ 14,171,000.00); the projected expenditure level (\$ 14,805,000.00) and the projected ending balance (\$ 2,530,101.30) on June 30, 2019.
2. May 2019 Actual - This column represents actual activity for the month of May, 2019.
3. 2018-19 Fiscal Y-T-D - This column represents actual activity from the 1<sup>st</sup> of July, 2018 through the end of May, 2019.

## SUMMARY

We will continue to monitor the budget and potentially make revisions to the 2019-20 projections as we move forward throughout the next month. As I mentioned last month, we are not where I thought we would be when I initially put these numbers together.

# Pike Delta York Local Schools

## General Fund Analysis

### May 2019

	2018-19 Estimate	May 2019 Summary	2018-19 Fiscal Y-T-D
Beginning Balance	3,164,101.30	3,538,400.94	3,164,101.30
Revenue	14,171,000.00	641,674.08	13,597,269.92
Expenditures	14,805,000.00	1,167,210.55	13,748,506.75
Ending Balance	<u>2,530,101.30</u>	<u>3,012,864.47</u>	<u>3,012,864.47</u>

Projected Ending Balance - May 2019

2,992,503.00

Variance

20,361.47

# PIKE DELTA YORK LOCAL SCHOOL DISTRICT Monthly Financial Narrative

## General Fund Revenue Analysis

This document evaluates our sources of revenue.

1. 2018-19 Estimates – This column represents the most current revenue projections from July 1<sup>st</sup>, 2018 through June 30<sup>th</sup>, 2019.
2. Projected Revenue for May of 2019 – This column represents the estimated revenue that the district anticipated receiving during the month May.
3. May 2019 Actual - This column represents actual cash receipts received during the month of May of 2019.
4. 2018-19 Projected – This column represents the estimated revenue from July 2018 through May 2019.
5. 2018-19 Actual – This column represents actual cash receipts received from July of 2018 through May of 2019.
6. Variance - This column represents the estimated revenue from July 2018 through May 2019 (Column 4) minus the actual receipts that we have actually received during that same time period (Column 5) to give us a variance for comparison purposes.
7. Percentage Received – Revenue actually received divided by the anticipated revenue.

## SUMMARY

Investments were not quite what we anticipated for the month of May. There continues to be some fluctuations in the market relative to the types of investments we currently are holding along with the fact that I'm holding over more in Star Ohio because of liquidity. I'm not anticipating any large influx of funds between now and the next real estate collection in July.

Actual revenue for the month fell just short of what we projected but is running a little higher on the annual comparison.

# Pike Delta York Local Schools

## General Fund Revenue Analysis

May 2019

<i>Revenue Source</i>	2018-19 Annual Estimate	May 2019 Projected	May 2019 Actual	2018-19 Projected	2018-19 Actual	Annual Variance	Percentage Received
Real Estate Taxes	4,475,000.00	0.00	0.00	4,475,000.00	4,477,061.20	2,061.20	100.05%
Public Utility Pers. Prop.	725,000.00	0.00	0.00	706,854.00	706,853.75	-0.25	97.50%
Investments	105,000.00	10,250.00	8,247.98	94,771.00	90,607.39	-4,163.61	86.29%
Other Local Receipts	700,000.00	41,210.00	43,136.03	658,790.00	726,404.41	67,614.41	103.77%
State Foundation	7,225,000.00	586,421.00	572,655.51	6,638,579.00	6,642,741.53	4,162.53	91.94%
Homestead/Rollback	550,000.00	0.00	0.00	550,000.00	548,948.33	-1,051.67	99.81%
Tangible Reimbursement	0.00	0.00	0.00	0.00	0.00	0.00	0.00%
Other State/Fed. Receipts	296,000.00	15,229.00	11,811.06	280,771.00	282,989.71	2,218.71	95.60%
Non-Operating Receipts	95,000.00	0.00	5,823.50	94,893.00	121,663.60	26,770.60	128.07%
<b>Totals</b>	<b>14,171,000.00</b>	<b>653,110.00</b>	<b>641,674.08</b>	<b>13,499,658.00</b>	<b>13,597,269.92</b>	<b>97,611.92</b>	<b>95.95%</b>
				95.26%		0.69%	

# PIKE DELTA YORK LOCAL SCHOOL DISTRICT Monthly Financial Narrative

## General Fund Budget Analysis

This document evaluates our expenditure levels.

1. 2018-19 Projected Expenditures - Projected expenditure levels for the 2018-19 fiscal year.
2. May Projected Expenditures - Expenditures projected for the month of May of 2019.
3. May 2019 Actual Expenditures - Actual expenditures incurred during the month of May of 2019.
4. 2018-19 Projected Expenditures - This column represents projected expenditures from the 1<sup>st</sup> of July, 2018 through the end of May 2019.
5. 2018-19 Expenditures - Actual expenditures from July 1<sup>st</sup>, 2018 through the end of May, 2019.
6. Variance - This column represents the estimated expenditures from July 1<sup>st</sup>, 2018 through the end of May, 2019 (Column 4) minus the actual expenditures that have actually been incurred during that same period (Column 5) to give us a variance for comparison purposes.
7. % Expended - This figure represents the percentage of funds committed for that specific expenditure area for the year.

## SUMMARY

It is going to be extremely difficult to come in under budget by the time we get through the month of June. We have approximately \$ 1,056,493.25 left in the budget for the month of June. We are in the process of cleaning up encumbrances and getting everything paid that we possibly can so that we have the most accurate financial picture that we can get. We will come close but as we have discussed, this has been a difficult year for the budget.

Purchased services have run significantly higher than in the past. Special education services, tuition and building repairs were all up. These expenses along with subsidizing all of our capital projects has had a significant effect on our cash balance this year. We will have to closely evaluate our special education budget for 2019-20 and potentially make adjustments in other areas of our budget to bring it back into line with our revenue sources.



# Pike Delta York Local Schools

## General Fund Budget Analysis

May 2019

<i>Expenditure Area</i>	2018-19 Appropriations	May 2019 Projected	May 2019 Expenditures	2018-19 Projected	2018-19 Actual	Annual Variance	% Expended
Salaries & Wages	7,695,000.00	600,000.00	604,678.66	7,106,362.00	7,105,191.98	-1,170.02	92.34%
Fringe Benefits	3,305,000.00	285,000.00	265,054.94	3,019,819.00	2,963,385.02	-56,433.98	89.66%
<b>Total</b>	<b>11,000,000.00</b>	<b>885,000.00</b>	<b>869,733.60</b>	<b>10,126,181.00</b>	<b>10,068,577.00</b>	<b>-57,604.00</b>	<b>91.53%</b>
Purchased Services	2,885,000.00	200,000.00	264,639.97	2,683,416.00	2,832,261.81	148,845.81	98.17%
Supplies & Materials	475,000.00	25,000.00	32,656.99	450,161.00	453,192.56	3,031.56	95.41%
Capital Outlay	5,000.00	0.00	52.36	6,044.00	6,388.26	344.26	127.77%
Other Objects	190,000.00	2,500.00	127.63	185,000.00	167,634.17	-17,365.83	88.23%
Non-Operational	250,000.00	0.00	0.00	220,453.00	220,452.95	-0.05	0.00%
<b>Totals</b>	<b>3,805,000.00</b>	<b>227,500.00</b>	<b>297,476.95</b>	<b>3,545,074.00</b>	<b>3,679,929.75</b>	<b>134,855.75</b>	<b>96.71%</b>
<b>Grand Total</b>	<b>14,805,000.00</b>	<b>1,112,500.00</b>	<b>1,167,210.55</b>	<b>13,671,255.00</b>	<b>13,748,506.75</b>	<b>77,251.75</b>	<b>92.86%</b>
				<b>92.34%</b>		<b>0.52%</b>	

# Pike Delta York Local Schools

## General Fund Year To Date Analysis

### May 2019

	May 2018 Actual	May 2019 Actual	Annual Variance	Percentage of Variance
<b><i>Beginning Cash Balance</i></b>	3,709,120.28	3,164,101.30	-545,018.98	-14.69%
<b><i>Revenue Sources</i></b>				
Real Estate Taxes	4,629,118.09	4,477,061.20	-152,056.89	-3.28%
Public Utility Personal	211,371.78	706,853.75	495,481.97	234.41%
Investments	55,033.11	90,607.39	35,574.28	64.64%
Other Local Receipts	714,882.69	726,404.41	11,521.72	1.61%
State Foundation	6,628,415.83	6,642,741.53	14,325.70	0.22%
Homestead/Rollback	551,761.73	548,948.33	-2,813.40	0.00%
Tangible Reimbursement	-42,031.65	0.00	42,031.65	0.00%
Other State Receipts	301,437.94	282,989.71	-18,448.23	-6.12%
Non-Operating Receipts	7,668.52	121,663.60	113,995.08	1486.53%
<b>Total Revenue</b>	<b>13,057,658.04</b>	<b>13,597,269.92</b>	<b>539,611.88</b>	<b>4.13%</b>
<b><i>Expenditure Area</i></b>				
Salaries & Wages	6,735,105.57	7,105,191.98	370,086.41	5.49%
Fringe Benefits	2,892,839.19	2,963,385.02	70,545.83	2.44%
Purchased Services	2,522,655.29	2,832,261.81	309,606.52	12.27%
Supplies & Materials	436,344.79	453,192.56	16,847.77	3.86%
Capital Outlay	4,062.69	6,388.26	2,325.57	0.00%
Other Objects	202,388.61	167,634.17	-34,754.44	-17.17%
Non-Operational Expenses	0.00	220,452.95	220,452.95	0.00%
<b>Total Expenditures</b>	<b>12,793,396.14</b>	<b>13,748,506.75</b>	<b>955,110.61</b>	<b>7.47%</b>
<b><i>Ending Cash Balance</i></b>	<b>3,973,382.18</b>	<b>3,012,864.47</b>	<b>-960,517.71</b>	<b>-24.17%</b>

# Pike-Delta-York Local School District

## Cash Reconciliation

May 2019

	<u>Sub-Totals</u>	<u>Totals</u>
<b>Gross Depository Balances:</b>		
F&M Warrant	60,445.50	
PayForIt	38,191.21	
Total Depository Balances (Gross)		98,636.71
<b>Adjustments to Bank Balance:</b>		
Cash in Transit to Bank		
Outstanding Checks	(37,151.76)	
Other		
Total Adjustments		-37,151.76
<b>Other Investments:</b>		
F&M - Money Market (Commercial Sweep)	188,600.05	
Star Ohio - General Fund	1,945,245.66	
Star Plus	6,322.44	
RedTree Investments	2,454,608.07	
Total Investments		4,594,776.22
<b>Petty Cash &amp; Change Funds:</b>		
Athletic Checking	23,100.00	
Athletic Gate Cash	3,700.00	
Cafeteria Change Funds	-	
H.S. Office Petty Cash	50.00	
Board Office Petty Cash	75.00	
Total Petty Cash		26,925.00
<b>BANK BALANCE</b>		<b>\$ 4,683,186.17</b>
<b>CURRENT CASH BALANCE</b>		<b>\$ 4,683,186.17</b>
Payroll Clearing Account	\$ 50,086.90	

DATE: 06/03/2019  
TIME: 16:13

PIKE-DELTA-YORK LOCAL SCHOOLS  
CASH RECONCILIATION AS OF 05/31/2019

PAGE: 1  
(USAEMSED)

	SUB-TOTALS	TOTALS
	-----	-----
Gross Depository Balances:		
F & M - Operating Account	\$ 60,445.50	
F & M - Pay-For-It Account	38,191.21	
	-----	
Total Depository Balances (Gross)		\$ 98,636.71
Adjustments to Bank Balance:		
Cash in Transit to Bank	\$ 0.00	
Outstanding Checks	37,151.76-	
Adjustments	0.00	
	-----	
Total Adjustments to Bank Balance		37,151.76-
Investments:		
Treasury Bonds and Notes	\$ 0.00	
Certificate of Deposits	0.00	
Other Securities	0.00	
Other Investments:		
F & M - Money Market Sweep	188,600.05	
Star Ohio - General Fund	1,945,245.66	
Star Plus	6,322.44	
RedTree Investments	2,454,608.07	
	-----	
Total Investments		4,594,776.22
Cash on Hand:		
Petty Cash:		
Athletic Checking	\$ 23,100.00	
Athletic Gate Cash	3,700.00	
H.S. Office Petty Cash	50.00	
Board Office Petty Cash	75.00	
Change Cash:		
Cash with Fiscal Agent	0.00	
	-----	
Total Cash on Hand		26,925.00
		-----
Total Balances		\$ 4,683,186.17
		=====
Total Fund Balance		\$ 4,683,186.17
		=====
Depository Clearance Accounts:		
F & M - Payroll Account	\$ 50,086.90	
	-----	
Total Clearance Account Balances		\$ 50,086.90

-----  
  
Treasurer

# PIKE-DELTA-YORK LOCAL SCHOOL DISTRICT INVESTMENT LISTING

May 2019

Institution	Account Type	Account Number	Receives Interest	MTD Interest	Interest Rate	Month End Balance
STAR Ohio	GF	11278	Monthly	\$ 4,608.27	2.54%	\$ 1,945,245.66
STAR Plus	GF	104791302979	Monthly	\$ 13.67	2.58%	\$ 6,322.44
F&M State Bank	Sweep	00-46762	Monthly	\$ 471.16		\$ 188,600.05
F&M State Bank	Warrant	00-46763	N/A	\$ -		\$ 60,445.50
F&M State Bank	PayFortl	21-62209	N/A	\$ -		\$ 38,191.21
REDTREE	Various	X90527	Monthly	\$ 3,154.88	2.96%	\$ 1,865,560.24
REDTREE - Scholarships	Various	X90527	Monthly	\$ 996.15	2.96%	\$ 589,047.83
<b>TOTAL INVESTMENTS</b>				<b>\$ 9,244.13</b>		<b>\$ 4,693,412.93</b>

**Monthly Investment Summary**  
**Pike-Delta-York Local Schools**  
**US Bank Custodian Acct Ending x90527**  
 May 31, 2019

**Monthly Cash Flow Activity**

From 04-30-19 through 05-31-19

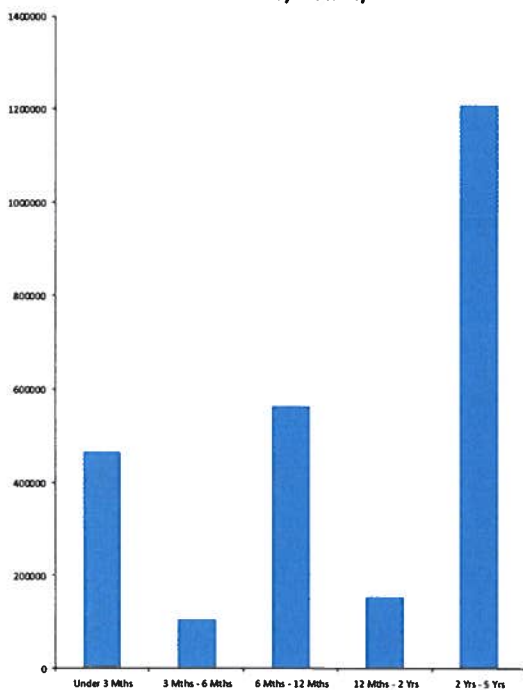
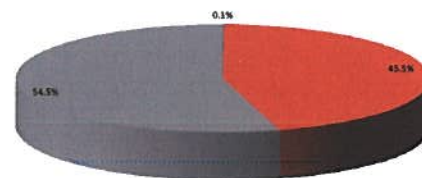
Beginning Book Value	2,450,457.04
Contributions	0.00
Withdrawals	0.00
Prior Month Management Fees	-207.12
Realized Gains/Losses	0.00
Gross Interest Earnings	4,358.15
Ending Book Value	2,454,608.07

**Market Value Summary**

Security Type	Market Value	Pct. Assets	Avg Yield at Cost	Wgt Avg Mat
<b>Money Market Fund</b>				
MONEY MARKET FUND	1,261.35	0.1	2.27	0.00
<b>Commercial Paper</b>				
COMMERCIAL PAPER	1,130,185.10	45.3	2.77	0.35
<b>Certificate of Deposit</b>				
CERTIFICATES OF DEPOSIT	1,352,688.21	54.2	3.12	3.07
Accrued Interest	9,810.10	0.4		
<b>TOTAL PORTFOLIO</b>	<b>2,493,944.77</b>	<b>100.0</b>	<b>2.96</b>	<b>1.83</b>

**Maturity Distribution**

Distribution by Maturity


**Security Type Allocation**


■ MONEY MARKET FUND ■ COMMERCIAL PAPER ■ CERTIFICATES OF DEPOSIT

**Disclosures:**

RedTree's internal accounting system is used as the source of the market value of this account. Although obtained from a source believed to be reliable, we cannot guarantee its accuracy. You should review all account statements provided by the custodian and compare with the statements provided by RedTree.

**Portfolio Holdings Report**  
**Pike-Delta-York Local Schools**  
**US Bank Custodian Acct Ending x90527**  
 May 31, 2019

Quantity	Cusip	Security Description	Moody's	S&P	Cost Basis	Market Value	Yield at Cost	Wtd Maturity	Purchase Date
<b>CERTIFICATES OF DEPOSIT</b>									
150,000	12556LAU0	CIT Bank NA, CA 3.050% Due 12-17-20			149,925.00	151,292.85	3.08	1.48	12-17-18
195,000	61760ASB6	Morgan Stanley Private Bank, NY 3.250% Due 11-15-21			194,707.50	198,380.52	3.30	2.35	11-15-18
150,000	02007GHF3	Ally Bank, UT 2.900% Due 01-31-22			149,925.00	151,422.60	2.92	2.53	01-31-19
150,000	7954502A2	Sallie Mae Bank, UT 2.750% Due 03-21-22			149,737.50	150,865.35	2.81	2.68	03-21-19
150,000	17312QX79	Citibank NA, SD 3.400% Due 12-21-22			149,775.00	153,977.40	3.44	3.29	12-21-18
150,000	20033AS23	Comenity Capital Bank, UT 2.850% Due 03-15-23			149,737.50	151,116.75	2.91	3.55	03-18-19
90,000	949763YY6	Wells Fargo Bank, SD 2.750% Due 04-10-23			89,973.00	89,613.99	2.77	3.61	04-23-19
150,000	38148P3A3	Goldman Sachs Bank USA, NY 3.550% Due 12-12-23			149,700.00	155,149.05	3.59	4.11	12-12-18
150,000	949763YW0	Wells Fargo Bank, SD 2.950% Due 03-27-24			149,700.00	150,869.70	3.01	4.44	03-27-19
		Accrued Interest				9,810.10			
					1,333,180.50	1,362,498.31	3.12	3.07	
<b>COMMERCIAL PAPER</b>									
200,000	46640QTR2	JP Morgan 0.000% Due 06-25-19	P-1	A-1	196,602.67	199,704.00	2.99	0.07	11-29-18
165,000	62479MTS2	MUFG Bank 0.000% Due 06-26-19	P-1	A-1	162,648.75	164,744.25	2.89	0.07	12-28-18
100,000	89233HV84	Toyota Motor Credit 0.000% Due 08-08-19	P-1	A-1+	98,391.86	99,545.00	2.82	0.19	01-11-19
105,000	19121BYE3	Coca Cola Company 0.000% Due 11-14-19	P-1	A-1	103,811.52	103,818.75	2.47	0.46	05-31-19
100,000	62479MZA4	MUFG Bank 0.000% Due 12-10-19	P-1	A-1	98,027.17	98,702.00	2.71	0.53	03-18-19
200,000	17327BZD0	Citigroup 0.000% Due 12-13-19	P-1	A-1	196,010.00	197,362.00	2.71	0.54	03-18-19
270,000	63873KZL4	Natixis NY 0.000% Due 12-20-19	P-1	A-1	264,674.25	266,309.10	2.68	0.56	03-25-19
					1,120,166.22	1,130,185.10	2.77	0.35	
<b>MONEY MARKET FUND</b>									
	USBMMF	First American Treasury Obligations Fund			1,261.35	1,261.35	2.27		
<b>TOTAL PORTFOLIO</b>					<b>2,454,608.07</b>	<b>2,493,944.77</b>	<b>2.96</b>	<b>1.83</b>	

**Disclosures:**

RedTree's internal accounting system is used as the source of the market value of this account. Although obtained from a source believed to be reliable, we cannot guarantee its accuracy. You should review all account statements provided by the custodian and compare with the statements provided by RedTree.

Questions? Call 888.596.2293 or email [info@redtreeinv.com](mailto:info@redtreeinv.com)

F I N A N C I A L S U M M A R Y R E P O R T  
 Processing Month: May 2019  
 PIKE-DELTA-YORK LOCAL SCHOOLS

End	Acc	Description	Beginning Balance	MTD Revenues	FYTD Revenues	MTD Expenditures	FYTD Expenditures	Current Available Balance
001	0000	GENERAL FUND	3,149,194.91	641,624.08	13,579,569.92	1,166,087.55	13,739,302.67	2,989,462.16
001	9000	GENERAL FUND - TECHNOLOGY	14,906.39	50.00	17,700.00	1,123.00	9,204.08	23,402.31
002	9799	BOND RETIREMENT - 2015	1,213,238.05	.00	1,370,212.83	.00	1,601,400.57	982,050.31
003	0000	PERMANENT IMPROVEMENT FUN	741.06	.00	248,847.58	.00	249,588.64	.00
006	0000	FOOD SERVICE FUND	.00	49,856.33	411,455.28	42,809.86	462,697.65	51,242.37
007	9001	BEN ATHERTON MEMORIAL SCH	3,031.70	3.53	60.08	.00	1,000.00	2,091.78
007	9002	NATE PARSONS MEMORIAL SCH	1,962.98	5.38	1,225.23	.00	200.00	3,188.21
007	9100	CLYDE J KINNEY MEMORIAL S	26,511.23	45.34	546.15	.00	200.00	26,857.38
007	9290	COACH CORY'S BACKPACK BUD	3,755.23	500.00	4,040.44	.00	1,813.77	5,981.90
007	9300	TOMMY CHILDRESS JR. MEMOR	6,986.47	10.35	142.01	.00	1,000.00	6,128.48
007	9400	PDYLSD BOARD OF EDUCATION	600.00	600.00	1,000.00	.00	1,000.00	600.00
007	9500	PDY FACULTY & STAFF MEMOR	35,316.25	60.29	894.08	.00	500.00	35,710.33
007	9600	DALE E ADAMS SCHOLARSHIP	505.29	.00	9.26	.00	500.00	14.55
007	9800	CLASS OF 1956 MEMORIAL SC	2,482.59	2.59	48.99	.00	1,000.00	1,531.58
007	9900	RICHARD SELL MEMORIAL SCH	506,576.09	868.67	10,484.91	.00	2,500.00	514,561.00
007	9990	SPROW BUCKS - TEACHER GRA	1,991.36	.00	800.00	.00	155.00	2,636.36
007	9991	KICKSTARTER SCHOLARSHIP	710.00	.00	400.00	.00	500.00	610.00
007	9992	SHARON K. BRUCE SCHOLARSH	.00	.00	1,000.00	.00	.00	1,000.00
009	9100	U.S.S.F. - DELTA ELEMENTA	.00	1,422.00	10,598.30	.00	25,693.61	15,095.31
009	9200	U.S.S.F. - DELTA M.S.	.00	3,918.10	9,941.19	177.48	17,400.49	7,459.30
009	9300	U.S.S.F. - DELTA H.S.	4,313.91	3,423.29	18,067.29	200.87	13,269.02	9,112.18
018	9002	DELTA ELEMENTARY	26,724.82	5,122.60	31,491.03	3,876.08	26,558.65	31,657.20
018	9005	DELTA MIDDLE SCHOOL	3,837.09	334.43	8,995.85	69.98	8,345.23	4,487.71
018	9006	DELTA HIGH SCHOOL	2,224.59	343.00	1,634.22	.00	1,453.51	2,405.30
019	9171	WELLNESS GRANT	2,733.50	.00	2,740.00	162.00	1,297.00	4,176.50
019	9173	J. PATTERSON LIBRARY GRAN	5,000.00	.00	.00	.00	.00	5,000.00
019	9174	21st CENTURY GRANT - M.S.	17,654.91	.00	370.00	2,148.66	3,670.26	14,354.65
034	9009	PERMANENT IMPROVEMENT - O	.00	.00	81,812.53	377.85	86,960.57	5,148.04
200	9012	CLASS OF 2018	3,371.82	.00	.00	.00	1,995.00	1,376.82
200	9013	CLASS OF 2019	6,119.46	.00	1,088.00	.00	4,436.92	2,770.54
200	9020	CLASS OF 2020	1,957.56	3,015.00	22,479.56	8,122.90	12,916.11	11,521.01
200	9021	CLASS OF 2021	526.77	.00	.00	.00	.00	526.77
200	9022	CLASS OF 2022	6,919.95	.00	.00	.00	510.82	6,409.13
200	9023	CLASS OF 2023	3,897.82	132.00	11,675.02	1,055.76	11,035.27	4,537.57
200	9024	CLASS OF 2024	10,527.90	10.00	8,770.02	.00	7,561.49	11,736.43
200	9025	CLASS OF 2025	5,300.89	60.00	27,825.25	.00	21,076.57	12,049.57
200	9026	CLASS OF 2026	.00	2,202.00	14,874.31	843.50	21,436.51	6,562.20
200	9027	CLASS OF 2027	.00	1,513.46	1,513.46	.00	.00	1,513.46
200	9100	H.S. - DRAMA CLUB	21.50	.00	.00	.00	.00	21.50
200	9150	M.S. - SCIENCE CLUB	737.47	.00	.00	97.67	97.67	639.80
200	9280	H.S. - SPANISH CLUB	2,374.09	.00	.00	.00	.00	2,374.09
200	9320	H.S. - FCCLA	4,084.16	.00	331.00	.00	572.49	3,842.67
200	9330	H.S. - FFA	781.38	305.00	21,641.77	290.22	15,608.28	6,814.87
200	9550	M.S. - CHEERLEADERS	2,336.58	.00	89.50	.00	381.60	2,044.48
200	9553	H.S. - CHEERLEADERS	2,887.66	.00	13,087.99	.00	12,075.63	3,900.02
200	9610	H.S. - STUDENT COUNCIL	4,942.91	.00	2,286.00	600.00	2,661.15	4,567.76



F I N A N C I A L S U M M A R Y R E P O R T  
 Processing Month: May 2019  
 PIKE-DELTA-YORK LOCAL SCHOOLS

End	Sec	Description	Beginning Balance	MTD Revenues	FYTD Revenues	MTD Expenditures	FYTD Expenditures	Current Available Balance
200	9611	M.S. - STUDENT COUNCIL	307.49	.00	835.89	124.47	703.79	439.59
200	9650	H.S. - SADD	871.08	.00	.00	.00	.00	871.08
200	9651	M.S. - SADD	387.32	.00	.00	.00	.00	387.32
200	9689	H.S. - DEL HI	3,278.24	934.75	2,695.75	.00	3,383.65	2,590.34
200	9690	H.S. - GREEN & WHITE	860.10	.00	20.00	.00	.00	880.10
200	9691	M.S. - YEARBOOK	5,506.56	380.50	1,883.50	39.75	802.18	6,587.88
200	9710	H.S. - NATIONAL HONOR SOC	339.21	100.00	100.00	.00	.00	439.21
200	9711	M.S. - NATIONAL HONOR SOC	2,446.12	1,389.92	1,908.92	.00	464.95	3,890.09
300	9200	M.S. - DESTINATION IMAGIN	11,617.51	10,259.27	28,558.02	.00	25,179.92	14,995.61
300	9350	H.S. - ART CLUB	1,248.32	.00	1,353.00	150.16	999.31	1,602.01
300	9440	H.S. - BAND	3,707.18	5,761.00	17,694.88	.00	10,558.17	10,843.89
300	9470	H.S. - DELAIRE'S	.00	.00	10,564.25	96.45	7,012.77	3,551.48
300	9490	H.S. - MUSICAL	7,424.41	25.00	4,297.75	3,231.53	10,026.46	1,695.70
300	9500	ATHLETIC FUND	.00	1,095.00	92,083.29	3,798.45	86,149.04	5,934.25
300	9501	ATHLETIC'S - BASEBALL	15,824.56	2,095.50	11,431.00	893.71	5,719.47	21,536.09
300	9502	ATHLETIC'S - BOY'S BASKET	2,124.10	720.00	1,540.00	125.00	1,989.82	1,674.28
300	9503	ATHLETIC'S - GIRL'S SOCCER	.00	.00	2,005.00	45.03	652.95	1,352.05
300	9504	ATHLETIC'S - FOOTBALL	3,139.42	.00	3,175.00	260.00	4,863.39	1,451.03
300	9505	ATHLETIC'S - BOY'S CROSS	2,925.07	.00	400.00	.00	2,669.95	655.12
300	9506	ATHLETIC'S - GOLF	3,152.03	.00	1,510.00	.00	2,436.24	2,225.79
300	9507	ATHLETIC'S - TRACK	.00	.00	4,757.00	580.15	7,689.67	2,932.67
300	9508	ELEMENTARY - SQUARE ONE A	2,285.55	792.58	1,223.58	.00	862.29	2,646.84
300	9509	ATHLETIC'S - GIRL'S BASKE	1,177.09	2,773.25	9,748.75	3,065.25	9,874.26	1,051.58
300	9510	ATHLETIC'S - SOFTBALL	161.69	638.75	3,978.75	.00	2,838.90	1,301.54
300	9513	ATHLETIC'S - BOY'S SOCCER	871.67	.00	4,170.00	.00	6,186.25	1,144.58
300	9514	ATHLETIC'S - VOLLEYBALL	7,273.05	1,620.00	1,620.00	195.00	1,246.70	7,646.35
300	9516	ATHLETIC'S - BOWLING	946.50	.00	315.00	.00	528.00	733.50
461	9018	VO. AG. 5TH QUARTER GRANT	.00	.00	4,347.82	.00	.00	4,347.82
499	9019	SCHOOL SAFETY GRANT	.00	.00	6,864.75	.00	1,086.90	5,777.85
572	9018	TITLE I 2017-18	.00	.00	57,100.53	.00	57,100.53	.00
572	9019	TITLE I 2018-19	.00	36,720.75	136,906.60	18,610.26	186,165.19	49,258.59
590	9019	TITLE II-A 2018-19	.00	.00	21,175.40	3,778.05	37,362.31	16,186.91
599	9018	21st CENTURY GRANT	.00	.00	31,891.49	.00	31,891.49	.00
599	9019	21st CENTURY GRANT	.00	47,087.14	124,524.50	25,485.34	137,083.13	12,558.63
Grand Total All Funds			5,165,660.61	827,700.85	16530,429.47	1,288,521.98	17012,903.91	4683,186.17
Total Invested Funds			.00					

Check#	Check Date	Org Sta	Vendor Paid	Check Amount	Status Date
062006	05/03/2019	W/R	AFFILIATED	81.77	05/31/2019
062007	05/03/2019	W/R	BAKER'S GAS & WELDING SUPPLIES	167.40	05/31/2019
062008	05/03/2019	W/R	EARL MECHANICAL SERVICES, INC	741.62	05/31/2019
062009	05/03/2019	W/R	HILTON COLUMBUS AT EASTON	378.00	05/31/2019
062010	05/03/2019	W/R	JOHNSON TRUCKING LLC	687.50	05/31/2019
062011	05/03/2019	W/R	K & K COLLISION	325.00	05/31/2019
062012	05/03/2019	W/R	LYONS LP GAS CO.	5,153.31	05/31/2019
062013	05/03/2019	W/R	MAXIM HEALTHCARE SERVICES, INC	2,375.00	05/31/2019
062014	05/03/2019	W/R	MICHAEL PAOLUCCI	900.00	05/31/2019
062015	05/03/2019	W/R	MT BUSINESS TECHNOLOGIES	80.00	05/31/2019
062016	05/03/2019	W/R	NEOFUNDS BY NEOPOST	700.00	05/31/2019
062017	05/03/2019	W/R	OHIO FFA ASSOCIATION	70.00	05/31/2019
062018	05/03/2019	W/R	OHIO GAS COMPANY	271.80	05/31/2019
062019	05/03/2019	W/R	RACHEL WIXEY & ASSOCIATES, LLC	6,326.51	05/31/2019
062020	05/03/2019	W/R	REPUBLIC SERVICES	3,403.06	05/31/2019
062021	05/03/2019	W/R	SQUIRE PATTON BOGGS (US) LLP	2,950.00	05/31/2019
062022	05/03/2019	W/R	TIME WARNER CABLE, INC.	258.12	05/31/2019
062023	05/03/2019	W/R	VALLEY ATHLETICS	393.71	05/31/2019
062024	05/03/2019	W/R	WINDSTREAM	99.17	05/31/2019
062025	05/03/2019	W/R	TIME WARNER CABLE, INC.	27.00	05/31/2019
062026	05/06/2019	W/R	94.3 THE BUCK	364.00	05/31/2019
062027	05/06/2019	W/R	ACE HARDWARE	331.46	05/31/2019
062028	05/06/2019	W/R	AFFILIATED	30.12	05/31/2019
062029	05/06/2019	W/R	ANGELA BELCHER	222.22	05/31/2019
062030	05/06/2019	W/R	AQUATEK WATER CONDITIONING	62.00	05/31/2019
062031	05/06/2019	W/R	ASCD	59.00	05/31/2019
062032	05/06/2019	W/R	BARN RESTAURANT	350.00	05/31/2019
062033	05/06/2019	W/R	Baumspage.com LLC	48.60	05/31/2019
062034	05/06/2019	W/R	BC TECHNOLOGIES COMPANY	205.00	05/31/2019
062035	05/06/2019	W/R	BROWN SUPPLY CO.	466.66	05/31/2019
062036	05/06/2019	W/R	CARDINAL BUS SALES &	3,535.77	05/31/2019
062037	05/06/2019	W/R	COMMERCE PAPER CO.	1,220.00	05/31/2019
062038	05/06/2019	W/R	CONCEPT PRINTING	260.00	05/31/2019
062039	05/06/2019	W/W	DEREK SHERIDAN	47.25	
062040	05/06/2019	W/R	DESIGN GRAPHICS GROUP, INC.	281.20	05/31/2019
062041	05/06/2019	W/R	EDGERTON LOCAL SCHOOLS	50.00	05/31/2019
062042	05/06/2019	W/R	ELMWOOD BOYS BASKETBALL	75.00	05/31/2019
062043	05/06/2019	W/R	ERIC ROBERTSON	150.16	05/31/2019
062044	05/06/2019	W/R	EVERGREEN LOCAL SCHOO DISTRICT	100.00	05/31/2019
062045	05/06/2019	W/R	FALOR FARM CENTER	1,475.00	05/31/2019
062046	05/06/2019	W/R	FORREST AUTO SUPPLY	313.44	05/31/2019
062047	05/06/2019	W/R	FRIENDS BUSINESS SOURCE	1,669.07	05/31/2019
062048	05/06/2019	W/R	GREAT LAKES BIOMEDICAL LTD	128.00	05/31/2019
062049	05/06/2019	W/R	HEALTHCARE PROCESS CONSULTING	3,250.00	05/31/2019
062050	05/06/2019	W/R	HIT, INC.	70.00	05/31/2019
062051	05/06/2019	W/R	HOPEWELL LOUDEN LOCAL SCHOOLS	150.00	05/31/2019
062052	05/06/2019	W/R	JENNIFER MAZUROWSKI	39.75	05/31/2019
062053	05/06/2019	W/R	JOSTENS, INC	107.90	05/31/2019
062054	05/06/2019	W/R	KENN-FELD GROUP, LLC	188.36	05/31/2019
062055	05/06/2019	W/R	JOHN R GREEN CO.	547.69	05/31/2019
062056	05/06/2019	W/R	LIBERTY CENTER ATHL. DEPART.	230.00	05/31/2019
062057	05/06/2019	W/R	MAUMEE PLUMBING CO.	16.20	05/31/2019

Date: 6/03/2019

C H E C K R E G I S T E R  
Processing Month: May 2019  
PIKE-DELTA-YORK LOCAL SCHOOLS

Page: 2  
(CHKREG)

Check#	Check Date	Org Sta	Vendor Paid	Check Amount	Status Date
062058	05/06/2019	W/R	MONTPELIER BOARD OF EDUCATION	220.00	05/31/2019
062059	05/06/2019	W/R	MSC INDUSTRIAL SUPPLY	21.30	05/31/2019
062060	05/06/2019	W/R	MTI ENTERPRISES, INC.	2,139.70	05/31/2019
062061	05/06/2019	W/R	Northwest Ohio Educational	10,908.01	05/31/2019
062062	05/06/2019	W/R	RETTIG MUSIC	1,297.07	05/31/2019
062063	05/06/2019	W/R	ROSETTA STONE, LTD.	884.81	05/31/2019
062064	05/06/2019	W/R	SCHOOL PRIDE, LTD.	967.00	05/31/2019
062065	05/06/2019	W/R	SCHOOL SPECIALTY	54.86	05/31/2019
062066	05/06/2019	W/R	TEAM SPORTS, INC.	150.00	05/31/2019
062067	05/06/2019	W/R	TED HASELMAN	420.60	05/31/2019
062068	05/06/2019	W/R	TINORA BOARD OF EDUCATION	110.00	05/31/2019
062069	05/06/2019	W/V	TOLEDO ZOO	1,076.00	05/07/2019
062070	05/06/2019	W/R	TREASURER	30.85	05/31/2019
062071	05/06/2019	W/R	TRINITY 3 LLC	948.00	05/31/2019
062072	05/06/2019	W/R	VILLAGE OF DELTA	2,046.95	05/31/2019
062073	05/06/2019	W/R	WAUSEON H.S. ATHLETIC ASSOC.	230.00	05/31/2019
062074	05/06/2019	W/R	WMTR RADIO	364.00	05/31/2019
062075	05/10/2019	C/R	TREASURER	304,367.35	05/31/2019
062076	05/08/2019	W/R	ST. MARY'S MEATS, LLC	489.99	05/31/2019
062077	05/08/2019	W/R	TOLEDO ZOO	808.00	05/31/2019
062078	05/08/2019	W/R	American United Life Ins. Co.	518.00	05/31/2019
062079	05/10/2019	W/R	CHRIS NORDMAN ASSOC., INC.	2,000.00	05/31/2019
062080	05/10/2019	W/R	JAMES M. ALLAN	875.00	05/31/2019
062081	05/10/2019	W/R	SAUDER VILLAGE	1,056.00	05/31/2019
062082	05/10/2019	W/R	IMAGINATION STATION	843.50	05/31/2019
062083	05/10/2019	W/R	SKYE CINEMA LLC	1,150.00	05/31/2019
062084	05/12/2019	W/R	ACE HARDWARE	20.98	05/31/2019
062085	05/12/2019	W/R	BETH JUBY	28.47	05/31/2019
062086	05/12/2019	W/R	COURTNEY HOLLISTER	37.06	05/31/2019
062087	05/12/2019	W/R	COMMUNITY MARKETS	3.99	05/31/2019
062088	05/12/2019	W/R	FRIENDS BUSINESS SOURCE	81.32	05/31/2019
062089	05/12/2019	W/R	GORDON FOOD SERVICE	15,111.40	05/31/2019
062090	05/12/2019	W/R	LAURIE L. GOMBASH	487.50	05/31/2019
062091	05/12/2019	W/R	NICKLES BAKERY INC.	775.15	05/31/2019
062092	05/12/2019	W/R	OHIO GAS COMPANY	3,466.11	05/31/2019
062093	05/12/2019	W/R	PARKER TIRE SALES & SERVICE	303.50	05/31/2019
062094	05/12/2019	W/R	REITER	2,316.05	05/31/2019
062095	05/12/2019	W/R	STAPLES ADVANTAGE	63.91	05/31/2019
062096	05/12/2019	W/R	TEAM SPORTS, INC.	498.25	05/31/2019
062097	05/12/2019	W/R	TOLEDO EDISON CO.	28,517.00	05/31/2019
062098	05/12/2019	W/R	TOMAHAWK PRINTING INC.	35.00	05/31/2019
062099	05/17/2019	W/R	CARDINAL BUS SALES &	1,116.94	05/31/2019
062100	05/17/2019	W/R	DELTA HARDWARE & INDUSTRIAL,	296.13	05/31/2019
062101	05/17/2019	W/R	DEREK FRIESS	386.11	05/31/2019
062102	05/17/2019	W/R	ENNIS BRITTON CO., LPA	2,368.30	05/31/2019
062103	05/17/2019	W/R	GRAINGER	372.72	05/31/2019
062104	05/17/2019	W/R	JUST BOUNCIN	1,350.00	05/31/2019
062105	05/17/2019	W/R	LAMMON BROTHERS	852.50	05/31/2019
062106	05/17/2019	W/R	NWOVB LEAGUE	195.00	05/31/2019
062107	05/17/2019	W/W	PAIGE TRIANA	45.03	
062108	05/17/2019	W/R	RACHEL WIXEY & ASSOCIATES, LLC	7,060.20	05/31/2019
062109	05/17/2019	W/R	ROSE PEST SOLUTIONS	226.00	05/31/2019

Check#	Check Date	Org Sta	Vendor Paid	Check Amount	Status Date
062110	05/17/2019	W/R	SELECT STONE COMPANY LLC	285.10	05/31/2019
062111	05/17/2019	W/W	STEVEN A. SHELTON	700.00	
062112	05/17/2019	W/R	STYKEMAIN TRUCKS, INC.	575.87	05/31/2019
062113	05/17/2019	W/R	TIME WARNER CABLE, INC.	1,110.72	05/31/2019
062114	05/17/2019	W/R	VISA/F & M STATE BANK	4,101.79	05/31/2019
062115	05/24/2019	C/R	TREASURER	303,429.78	05/31/2019
062116	05/21/2019	W/W	BRYAN HIGH SCHOOL ATHL. DEPT.	100.00	
062117	05/21/2019	W/R	SEVEN EAGLES HISTORICAL	534.00	05/31/2019
062118	05/21/2019	W/W	SIENA HEIGHTS UNIVERSITY	145.00	
062119	05/21/2019	W/R	TRINE UNIVERSITY ATHLETICS	370.00	05/31/2019
062120	05/21/2019	W/W	UNIVERSITY OF TOLEDO	825.00	
062121	05/21/2019	W/W	URSULINE COLLEGE BASKETBALL	400.00	
062122	05/24/2019	C/R	TREASURER	7,500.00	05/31/2019
062123	05/23/2019	W/R	POSTMASTER	394.30	05/31/2019
062124	05/23/2019	W/R	VISA/F & M STATE BANK	1,875.14	05/31/2019
062125	05/23/2019	W/R	WOOD CO. EDUCATIONAL	511.00	05/31/2019
062126	05/24/2019	W/R	ADVANCED INCENTIVES	1,055.76	05/31/2019
062127	05/24/2019	W/W	Baumspage.com LLC	24.30	
062128	05/24/2019	W/R	CALAWAY'S FLOWERS & ANTIQUES	35.00	05/31/2019
062129	05/24/2019	W/R	CARDINAL BUS SALES &	1,298.13	05/31/2019
062130	05/24/2019	W/R	eSCHOOL VIEW	3,999.00	05/31/2019
062131	05/24/2019	W/R	HOME DEPOT/GECF	191.68	05/31/2019
062132	05/24/2019	W/R	FIRST NATIONAL PRINTING &	4,098.00	05/31/2019
062133	05/24/2019	W/R	Northwest Ohio Educational	620.39	05/31/2019
062134	05/24/2019	W/W	RYAN ROBERTSON LLC	2,974.40	
062135	05/24/2019	W/R	SCREEN PRINTED PRODUCTS	890.55	05/31/2019
062136	05/24/2019	W/W	SMITH'S TWIST-T-FREEZE	96.00	
062137	05/24/2019	W/R	TOLEDO EDISON CO.	335.06	05/31/2019
062138	05/24/2019	W/R	UNIVERSAL LETTERING CO., INC	102.00	05/31/2019
062139	05/24/2019	W/R	WINDSTREAM	109.63	05/31/2019
062140	05/29/2019	W/W	ANDREW HANGE	100.00	
062141	05/29/2019	W/W	ANGELA BELCHER	50.00	
062142	05/29/2019	W/W	BRENDA McCULLOUGH	25.00	
062143	05/29/2019	W/R	COURTNEY HOLLISTER	77.32	05/31/2019
062144	05/29/2019	W/W	DANA MEIRING	31.67	
062145	05/29/2019	W/W	DEAN BRICK	100.00	
062146	05/29/2019	W/R	DELTA ELEMENTARY SCHOOL	899.00	05/31/2019
062147	05/29/2019	W/R	DEREK FRIESS	5,805.00	05/31/2019
062148	05/29/2019	W/R	EARL RICHARDSON	152.54	05/31/2019
062149	05/29/2019	W/W	ELLEN BERNAL	633.09	
062150	05/29/2019	W/W	J.W. PEPPER, INC.	448.14	
062151	05/29/2019	W/W	JANEY ALLEN DUNFORD	146.23	
062152	05/29/2019	W/W	JASPER ENGINE EXCHANGE, INC	4,578.00	
062153	05/29/2019	W/W	JEREMY GILLEN	310.55	
062154	05/29/2019	W/W	JOHNSON CONTROLS SECURITY	817.66	
062155	05/29/2019	W/R	JULIE BARNES	212.55	05/31/2019
062156	05/29/2019	W/W	KELLIE CREIGHTON	50.00	
062157	05/29/2019	W/W	KIRSTEN MIGNIN	236.27	
062158	05/29/2019	W/W	LYDEN OIL COMPANY	349.20	
062159	05/29/2019	W/W	MARSHA ALLEN	857.96	
062160	05/29/2019	W/R	MARY TRESNAN- REIGHARD	147.00	05/31/2019
062161	05/29/2019	W/W	MICHELLE SHELTON	28.02	

Date: 6/03/2019

C H E C K R E G I S T E R  
Processing Month: May 2019  
PIKE-DELTA-YORK LOCAL SCHOOLS

Page: 4  
(CHKREG)

Check#	Check Date	Org Sta	Vendor Paid	Check Amount	Status Date
062162	05/29/2019	W/W	MICHELLE STICKLEY	27.54	
062163	05/29/2019	W/W	MT BUSINESS TECHNOLOGIES	160.00	
062164	05/29/2019	W/R	Northwest Ohio Educational	9,063.68	05/31/2019
062165	05/29/2019	W/W	NORTHWEST STATE	752.00	
062166	05/29/2019	W/W	OACAC	45.00	
062167	05/29/2019	W/W	RACHEL WIXEY & ASSOCIATES, LLC	6,995.02	
062168	05/29/2019	W/W	REPUBLIC SERVICES	3,307.96	
062169	05/29/2019	W/W	STOLLER ENTERPRISES	889.00	
062170	05/29/2019	W/R	TREASURER	500.00	05/31/2019
062171	05/29/2019	W/W	U.S. BANK EQUIPMENT FINANCE	3,196.64	
062172	05/29/2019	W/W	MARATHON	1,300.39	
062173	05/30/2019	W/W	SOUNDWAVE	250.00	
062174	05/31/2019	W/W	AMAZON.COM	1,045.40	
062175	05/31/2019	W/W	TIME WARNER CABLE, INC.	285.12	
062176	05/31/2019	B/B	JESSICA FORD	810.00	
900322	05/08/2019	M/M	CHARLIE LEBOEUF	146,210.00	
900323	05/08/2019	M/M	CHARLIE LEBOEUF	13,050.00	
900324	05/08/2019	M/M	CHARLIE LEBOEUF	3,130.96	
900325	05/10/2019	M/M	TREASURER	4,352.91	
900326	05/10/2019	M/M	TREASURER	946.33	
900327	05/10/2019	M/M	TREASURER	3,211.08	
900328	05/10/2019	M/M	TREASURER	1,405.19	
900329	05/24/2019	M/M	TREASURER	4,343.08	
900330	05/24/2019	M/M	TREASURER	946.33	
900331	05/24/2019	M/M	TREASURER	3,358.08	
900332	05/24/2019	M/M	TREASURER	1,432.58	
900333	05/24/2019	M/M	TREASURER	108.78	
900334	05/24/2019	M/M	STATE TEACHERS RETIRE-	70,598.00	
900335	05/24/2019	M/M	SCHOOL EMPLOYEES	21,630.00	
Total Checks Issued				\$ 1,099,518.30	

# PIKE DELTA YOUR LOCAL SCHOOLS

## Unencumbered Liabilities (Then & Now)

May 2019

<b>Vendor</b>	<b>Invoice Date</b>	<b>P.O. #</b>	<b>P.O. Date</b>	<b>Amount of Invoice</b>
None				



**PIKE DELTA YORK LOCAL  
SCHOOL DISTRICT  
2018-19 Appropriations**

	Initial 2018-19 Appropriations	Final 2018-19 APPROPRIATIONS	Revisions
001 0000	14,360,974.00	15,244,897.12	883,923.12
001 9000	12,000.00	13,000.00	1,000.00
002 9799	1,575,403.00	1,601,403.00	26,000.00
003 0000	200,000.00	250,000.00	50,000.00
006 0000	500,000.00	509,206.63	9,206.63
007 9001	1,000.00	2,000.00	1,000.00
007 9002	500.00	0.00	-500.00
007 9100	500.00	200.00	-300.00
007 9290	5,000.00	4,000.00	-1,000.00
007 9300	1,000.00	1,000.00	0.00
007 9400	1,000.00	1,000.00	0.00
007 9500	500.00	500.00	0.00
007 9600	500.00	500.00	0.00
007 9700	0.00	0.00	0.00
007 9800	1,000.00	1,000.00	0.00
007 9900	8,000.00	2,500.00	-5,500.00
007 9990	3,000.00	2,000.00	-1,000.00
007 9991	0.00	500.00	500.00
009 9100	25,000.00	63,250.00	38,250.00
009 9200	25,000.00	22,475.00	-2,525.00
009 9300	25,000.00	22,290.77	-2,709.23
018 9002	15,000.00	36,100.00	21,100.00
018 9005	6,000.00	16,350.00	10,350.00
018 9006	2,000.00	2,914.00	914.00
019 9171	3,000.00	5,508.50	2,508.50
019 9172	1,000.00	0.00	-1,000.00



**PIKE DELTA YORK LOCAL  
SCHOOL DISTRICT  
2018-19 Appropriations**

		Initial 2018-19	Final 2018-19		
		Appropriations	APPROPRIATIONS	Revisions	
019	9173	J. PATTERSON LIBRARY GRANT	5,000.00	5,000.00	0.00
019	9174	21ST CENTURY GRANT - MIDDLE SCHOOL	150,000.00	6,698.43	-143,301.57
034	9009	O.S.F.C. MAINTENANCE FUND	150,000.00	98,000.00	-52,000.00
200	9012	CLASS OF 2018	3,400.00	3,876.82	476.82
200	9013	CLASS OF 2019	6,000.00	9,225.00	3,225.00
200	9020	CLASS OF 2020	14,000.00	20,435.00	6,435.00
200	9021	CLASS OF 2021	1,500.00	0.00	-1,500.00
200	9022	CLASS OF 2022	100.00	500.82	400.82
200	9023	CLASS OF 2023	18,000.00	15,350.00	-2,650.00
200	9024	CLASS OF 2024	12,000.00	9,050.00	-2,950.00
200	9025	CLASS OF 2025	15,000.00	23,092.50	8,092.50
200	9026	CLASS OF 2026	0.00	23,000.00	23,000.00
200	9027	CLASS OF 2027	0.00	0.00	0.00
200	9150	MIDDLE SCHOOL SCIENCE CLUB	0.00	250.00	250.00
200	9250	FRENCH CLUB	0.00	0.00	0.00
200	9280	SPANISH CLUB	150.00	0.00	-150.00
200	9320	FCCLA	0.00	750.00	750.00
200	9330	FFA	15,000.00	21,300.00	6,300.00
200	9340	FTA	0.00	0.00	0.00
200	9380	MEDS	0.00	0.00	0.00
200	9550	M.S. CHEERLEADERS	0.00	381.60	381.60
200	9553	H.S. CHEERLEADERS	5,000.00	12,200.00	7,200.00
200	9610	H.S. STUDENT COUNCIL	2,200.00	3,635.00	1,435.00
200	9611	JR. HI STUDENT COUNCIL	500.00	755.00	255.00
200	9650	H.S. SADD	0.00	0.00	0.00
200	9651	M.S. SADD	50.00	100.00	50.00

# PIKE DELTA YORK LOCAL SCHOOL DISTRICT

## 2018-19 Appropriations

		Initial 2018-19	Final 2018-19	
		Appropriations	APPROPRIATIONS	Revisions
200	9689 DEL HI	2,500.00	3,615.00	1,115.00
200	9690 GREEN & WHITE	0.00	0.00	0.00
200	9691 M.S. YEARBOOK	375.00	1,555.00	1,180.00
200	9710 H.S. NATIONAL HONOR SOCIETY	125.00	140.00	15.00
200	9711 JR. HIGH NATIONAL HONOR SOCIETY	500.00	500.00	0.00
300	9200 DESTINATION IMAGINATION	25,000.00	37,800.00	12,800.00
300	9350 ART/TECH CLUB	500.00	1,330.00	830.00
300	9440 HIGH SCHOOL BAND	12,000.00	22,225.00	10,225.00
300	9470 CHORAL-DELAIRE	10,000.00	7,191.76	-2,808.24
300	9471 M.S. CHOIR	0.00	1,000.00	1,000.00
300	9472 WOMEN'S GLEE CLUB	0.00	200.00	200.00
300	9490 HIGH SCHOOL MUSICAL	10,000.00	11,550.00	1,550.00
300	9500 ATHLETIC FUND	75,000.00	145,340.00	70,340.00
300	9501 BASEBALL TEAM	12,000.00	10,000.00	-2,000.00
300	9502 BASKETBALL TEAM - BOYS	1,600.00	3,015.00	1,415.00
300	9503 SOCCER TEAM - GIRLS	1,500.00	1,610.00	110.00
300	9504 FOOTBALL TEAM	6,300.00	6,500.00	200.00
300	9505 CROSS COUNTRY TEAM - BOYS	3,300.00	3,500.00	200.00
300	9506 GOLF TEAM	3,600.00	3,500.00	-100.00
300	9507 TRACK TEAM - BOYS & GIRLS	8,000.00	7,735.00	-265.00
300	9508 SQUARE ONE ART FUNDRAISER	500.00	1,000.00	500.00
300	9509 BASKETBALL TEAM - GIRLS	10,000.00	10,000.00	0.00
300	9510 SOFTBALL TEAM	6,300.00	6,000.00	-300.00
300	9513 SOCCER TEAM - BOYS	2,750.00	7,000.00	4,250.00
300	9514 VOLLEYBALL TEAM	5,000.00	5,250.00	250.00
300	9516 BOWLING TEAM	2,300.00	2,500.00	200.00

**PIKE DELTA YORK LOCAL  
SCHOOL DISTRICT**  
2018-19 Appropriations

		Initial 2018-19	Final 2018-19		
		Appropriations	APPROPRIATIONS	Revisions	
461	9018	VOCATIONAL AG. 5TH QUARTER 2017-18	4,195.80	4,347.82	152.02
461	9019	VOCATIONAL AG. 5TH QUARTER 2018-19	4,195.80	0.00	-4,195.80
499	9019	SCHOOL SAFETY GRANT	0.00	6,864.75	6,864.75
516	9019	IDEA-B 2018-19	275,966.10	273,732.53	-2,233.57
551	9019	L.E.P. 2018-19	2,843.66	3,147.52	303.86
572	9018	TITLE I 2017-18	30,000.00	57,100.53	27,100.53
572	9019	TITLE I 2018-19	151,470.96	152,051.31	580.35
587	9019	IDEA B PRESCHOOL 2018-19	275,966.10	10,591.52	-265,374.58
590	9019	TITLE II-A 2018-19	32,073.35	32,073.35	0.00
599	9018	21ST CENTURY GRANT - ELEMENTARY	0.00	34,098.93	34,098.93
599	9019	21ST CENTURY GRANT - ELEMENTARY	200,000.00	200,000.00	0.00
599	9019	TITLE IV-A 2018-19	13,880.33	13,910.16	29.83
<b>Total</b>		<b>18,360,019.10</b>	<b>19,144,170.37</b>	<b>784,151.27</b>	